



AD-ASTRA

design Marco Lavit

Collection of lamps for interiors with diffused light, available in floor, table and suspension versions, consisting of a supporting structure in Ø 13mm brass tubing, and turned solid brass details in various sections. Finish available in polished brass, obtained by electroplating, with a transparent protective coating, or painted with epoxy powders burnished colour.

The suspension version is equipped with a steel cable attached to a ceiling steel plate in the finishes of the lamp body.

All versions have a Ø30 mm opaline diffuser of blown borosilicate glass, fitted to the lamp body.

LED light powered at 24V with a maximum colour temperature of 3000K.

Ad-astra floor version:

Voltage: 220-240 V

Weight: 4,8 kg

Source: Strip LED

Dimmable: Adjustable via button on the transformer

Environment: Indoor

Power: 24 W

Power cord length: 210 cm

Socket: 3-pole 16 A Schuko Europe plug

Ad-astra table version:

Voltage: 220-240 V

Weight: 3,8 kg

Source: Strip LED

Dimmable: Adjustable via button on the transformer

Environment: Interni

Power: 24 W

Power cord length: 230 cm

Socket: 3-pole 16 A Schuko Europe plug

Ad-astra suspension version:

Voltage: 220-240 V

Weight: 2,6 kg

Source: Strip LED

Dimmable: Remote dimmable (dimmer not included)

Environment: Interni

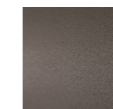
Power: 24 W

Power cord length: Max 240 cm

Structure



Polished Brass
Electropainting
Finish



Burnished
Painting

Technical Drawings

Floor version

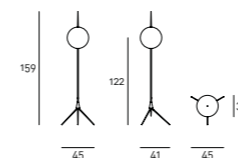
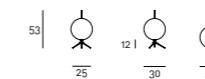
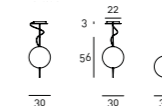


Table version



Suspension version



Notes

Polished Brass Electropainting Finish is obtained by electroplating. Please be informed that the production technology used for this specific finishing, requires a carefully handcrafted attention and each piece is made in three distinct phases: nickel plating, subsequent galvanic brass plating and polishing, bronzing and satin finishing. Any imperfections are normal and should not be considered defects, but characteristics of the finish used, which makes each piece unique and different, increasing its preciousness.

